



# STARTECH

## Screening Buckets

A screening bucket that is both solid in construction and lighter in weight



## STARTECH

**Screenpod STARTECH screening buckets are innovative and durable in design, by incorporating the very best wear resistant materials available in the market today. We have created a screening bucket that is both solid in construction and lighter in weight allowing fitting on a wider range of excavators and loading shovels.**

To ensure the maximum performance and efficiency over a wider range of materials we fit a double drive system with 2 x heavy duty hydraulic motors to each unit as standard, changeable blade sets are available and our design ensures easy maintenance and serviceability of each unit. Startech have 3 grain sizes available as standard 16, 24 & 35mm and can offer alternative shaft configurations for screening and crushing specialist materials. Startech buckets screen a wide range of materials from Topsoil, peat, compost, mulch, even Asphalt Millings, and are used in applications from recycling of demolition and builders waste to mixing and soil stabilization.

**we build  
our products  
to last!**



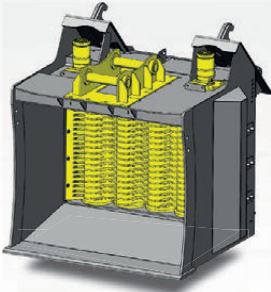
▼ Screenpod STARTECH Screening Buckets



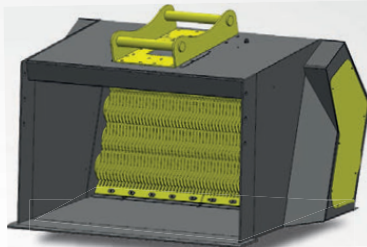
# Various shaft configurations available

**Screenpod™**

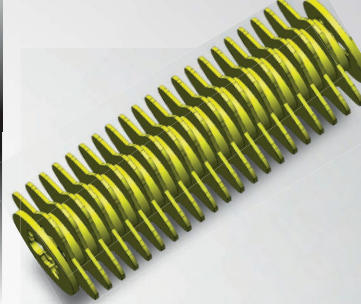
**ST5: 1350**



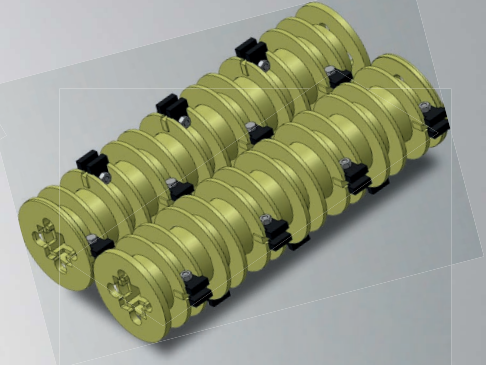
**ST3: 2300**



**Standard Rotor**



**ST4: Crushing Rotor**



| MODEL     | Base Machine              |        | Hydraulic Flow | Pressure | Volume        |                   | (Dimensioning) |             |             | Weight |
|-----------|---------------------------|--------|----------------|----------|---------------|-------------------|----------------|-------------|-------------|--------|
|           | Excavator<br>from < (ton) | Loader |                |          | ISO/SEA<br>m³ | Screen Area<br>m² | Height<br>mm   | Width<br>mm | Depth<br>mm |        |
| ST 2-1500 | 7-12                      | 3-7    | 40-75          | 200/300  | 0.65/0.75     | 0.6               | 950            | 1700        | 1050        | 580    |
| ST 3-1500 | 8-12                      | 6-10   | 60-250         | 200/300  | 0.70/0.80     | 1.0               | 1000           | 1750        | 1200        | 980    |
| ST 4-1500 | 14-21                     | 9-15   | 110-250        | 200/300  | 1.00/1.10     | 1.3               | 1300           | 1750        | 1500        | 1300   |
| ST 3-1700 | 22-25                     | 12-16  | 120-250        | 200/350  | 2.30/2.50     | 1.4               | 1400           | 2050        | 1750        | 1950   |
| ST 4-1700 | 24-30                     | 14-20  | 120-250        | 200/350  | 2.80/3.10     | 1.6               | 1650           | 2050        | 1800        | 2500   |
| ST 3-2300 | 25-35                     | 18-25  | 170-250        | 200/350  | 3.50/4.10     | 2.0               | 1400           | 2650        | 1750        | 2800   |
| ST 4-2300 | 30-40                     | 21-30  | 170-250        | 200/350  | 3.90/4.50     | 2.4               | 1650           | 2650        | 1800        | 3200   |
| ST 4-1100 | 16-22                     | N/A    | 120-250        | 200/350  | 1.00/1.20     | 0.9               | 1450           | 1300        | 1350        | 1350   |
| ST 5-1350 | 18-24                     | N/A    | 120-250        | 200/350  | 1.30/1.50     | 1.2               | 1500           | 1550        | 1500        | 1650   |



# STARTECH

**contact Screenpod:**

30 Tullyodonnell Road  
Rock  
Dungannon  
County Tyrone  
Northern Ireland  
BT70 3JE  
United Kingdom

**mob:** +44 (0) 7710058066

**web:** [www.screenpod.co.uk](http://www.screenpod.co.uk)

**email:** [sales@screenpod.co.uk](mailto:sales@screenpod.co.uk)

**Authorised Dealer:**